



ASPIRE - LEARN - ACHIEVE

PROSPECTUS



BENTLEY PARK COLLEGE

A Complete Prep to Year 12 Education



COLLEGE PRINCIPAL'S WELCOME

Bentley Park College is a state school located in the Southern Corridor of Cairns and offers the advantage of a complete Prep to Year 12 education. The College opened its gates in 1997 and comprises Primary and Secondary Sectors, including a Special Education Program, on one of the largest school sites in Queensland.

Bentley Park College acknowledges the Gimuy Walubarra Yidinji People, the Traditional Owners of the land the College is located, and pay respect to their Elders, their Ancestors and Future Generations.

At Bentley Park College, students achieve through quality teaching and learning and are motivated by the motto and vision, 'Aspire Learn Achieve'. Diversity is celebrated and the values of respect, responsibility and resilience are proudly upheld.

Our Pillars of Excellence underpin learning opportunities in Academia, Citizenship, The Arts, Technology and Sport, with students moving through the key juncture years of education (Years P-2, 3-6, 7-9 and 10-12) within an inclusive and enriching learning environment. Strengths in these areas are witnessed every day in our students and in the career success of our graduates.

Connections across many aspects of College life allow coordination of various learning programs to provide

holistic student support services, and enables collaboration between Primary and Secondary students and staff.

The College is committed to working with and building our community, industry and tertiary partners to encourage students to discover and develop their interests and talents. We support each student to succeed in their chosen pathway, actively contribute to society and reach their full potential.

This is reflected in our service commitment - that every graduating student can achieve an ATAR and be on the pathway to university, pursue a vocational pathways program or transition successfully into the workforce.

Parents and carers are encouraged to play an active role in their student's learning and attend regular parent teacher interviews, information nights and College events. Joining our Parents and Citizens' Association or the Local Community Education Body is also a great way to stay connected and give back to the College community.

Welcome to Bentley Park College – please phone 07 4040 8130 to speak with our enrolments officer. We look forward to having you join us.

Bruce Houghton
COLLEGE PRINCIPAL



ASPIRE - LEARN - ACHIEVE

VISION

Aspire Learn Achieve

MISSION

Students achieve a complete Prep to Year 12 education in an environment that inspires excellence in Academia, Citizenship, The Arts, Technology and Sport.

VALUES

Respect Responsibility Resilience

PILLARS OF EXCELLENCE



ACADEMIA



CITIZENSHIP



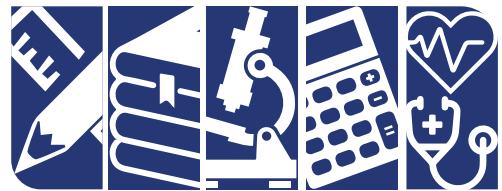
THE ARTS



TECHNOLOGY



S P O R T



ACADEMIA

Our P-12 curriculum framework supports students as they move through the key junctures of Prep-2, Year 3-6, Junior Secondary (Year 7-9) and Senior Secondary (Years 10-12). Learning is developed and extended through experiences in and beyond the classroom.

From Prep to Year 10, students learn English, Mathematics, Science, Humanities and Social Sciences, The Arts, Technology, Health and Physical Education and Languages. Various extension programs, such as Enrichment@Bentley, TechExpress and the Aspire Program, improve and progress student learning. The College has extensive intervention programs like Flexispace and STEP to ensure that all students achieve to their potential.

Year 11 and 12 students continue their academic studies according to pathways guided by the Queensland Curriculum and Assessment Authority (QCAA). This prepares them for success in their chosen field, giving them options for higher education. Options include General and Applied Studies, Certificate II and III VET Qualifications, School based apprenticeships and traineeships and individualised pathways for students on QCIA

Bentley Park College was chosen to be the first Gateway to Industry Health school in Queensland, with the new Medical Training Precinct providing students with insight, access and connectivity to health-related careers through authentic learning opportunities.

The College is also a Gateway to Industry ICT School in recognition of the extensive use of technology use in teaching and learning and the specialist ICT programs on offer.

Bentley Park College's academic success can be attributed to our expert teaching team, a smooth student pathway through the Australian Curriculum, excellent facilities and access to a range of innovative educational tools.



Photo by: Brendan Radke/Newspix

L E A R N



CITIZENSHIP



Citizenship and leadership at Bentley Park College fosters identity development, inclusion and resilience. Students develop leadership skills through active participation in community events, cultural ceremonies and peer mentoring.

There is a strong student leadership program which includes Primary, Junior Secondary and College Captains and a range of other leadership roles. These students host parades and ceremonies, including community and cultural events such as Presentation Night, Anzac Day, NAIDOC celebrations and fundraisers.

Other citizenship and leadership programs include The Clontarf Academy and Yaburu Bulmba Indigenous boys' and girls' programs, and The Resilience Project which develops emotional literacy through gratitude, empathy and mindfulness.



THE ARTS

Bentley Park College offers all five Arts strands - Dance, Drama, Media Arts, Music and Visual Arts. In addition, the Instrumental Music Program offers Strings, Woodwind, Brass and Percussion.

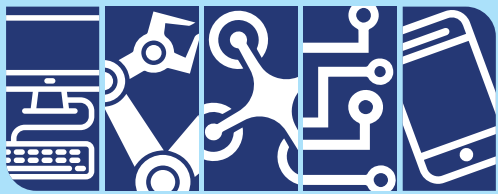
All students will experience The Arts as part of their complete education, and can also engage in extra-curricular Arts activities.

The College Band and Choir perform regularly at school and community events such as Anzac Day, The Cairns and District Junior Eisteddfod, Fanfare, The Cairns Show and Presentation Night.

A Primary musical is produced every two years featuring students from Years 3 to 6, and the Secondary Sector traditionally hold a number of Arts showcases each year including *The Big Night Out*, *MMADDNess* and *Show and Shine* end of term concerts for Year 7 students.

Students enjoy these fantastic opportunities to experience the thrill of performing live in front of a supportive audience. Budding artists can also showcase their Visual Art and Fashion artefacts in the theatre gallery.





TECHNOLOGY

As a Gateway to Industry ICT School, the College fosters innovation and emerging tech talent. This includes a Virtual Reality (VR) classroom Augmented Reality (AR) designed to enhance and enrich learning across the Australian Curriculum.

The Digital Technologies curriculum from Prep to Year 12 is designed to provide students with authentic learning challenges that foster curiosity, confidence, persistence, innovation, creativity, respect and cooperation.

SMART interactive panels are installed in every Primary, Special Education Program classroom, and most Secondary classrooms. Students in Prep, Year 1 and Year 2 all have access to their own iPad tablet device. In Years 3 to 6, iPads are used to access the Augmented Reality (AR) learning opportunities.

A well-established One-to-One Laptop Program is available for students from Years 3 to 10, referred to as TechExpress in Primary and the Aspire Program in Secondary. The College also supports BYOD across the Secondary sector.

Technology studies are also augmented by an extra-curricular Robotics and Esports Clubs.

The College runs the VR Learning and Design Hub, which produces Virtual Reality and Augmented Reality curriculum modules for use in schools across Queensland.



S P O R T



The Bentley Park College Sports Academy comprises the HPE Excellence Program, Rugby League Academy, Netball Academy and Football Academy, which links to Brisbane Roar FC and Southside Comets FC. The advantage of a P-12 College is that all students have access to specialist teachers and coaches in these areas.

Annual sporting events for all students include Swimming, Cross Country and Athletics Carnivals. The College has four sports houses named after local reefs with sea creature mascots – the Arlington Marlins (blue), the Euston Tiger Sharks (yellow), the Onyx Octopuses (red) and the Upolu Crocodiles (green).

Students aged 10 and up also have the opportunity to trial for Trinity Coast South (TCS) district sports teams, which can lead to Peninsula, State and National representation.

The College also has relationships with many community sporting groups to provide links to both on-campus and off-campus sporting opportunities.

Other sporting opportunities are provided through the Enrichment@Bentley program and events such as Gala Sports Days and regional competitions.





ASPIRE - LEARN - ACHIEVE

GRATITUDE

BE
THANKFUL

EMPATHY

BE
KIND

MINDFULNESS

BE IN THE
MOMENT

**EMOTIONAL
LITERACY**

BE
AWARE

THE
**RESILIENCE
PROJECT™**

McLaughlin Road, Bentley Park Q 4869
PO Box 289, Edmonton QLD 4869
Phone : 07 4040 8111
Fax : 07 4040 8100
Email : info@bentleyparkcollege.eq.edu.au
www.bentleyparkcollege.eq.edu.au

ABN: 60 185 065 962



Bentley Park College acknowledges the Gimuy Walubarra Yidinji People, the Traditional Owners of the land on which the College is located, and pay respect to their Elders, their Ancestors and Future Generations.



gateway to industry schools
**information and
communication technology**



VR & AR Education



clontarf
foundation



P & C



YABURU BULMBA



gateway to industry schools
health