



ASPIRE - LEARN - ACHIEVE

Preventing and Responding to Bullying Policy



ACADEMIA



CITIZENSHIP



THE ARTS



TECHNOLOGY



S P O R T

BENTLEY PARK COLLEGE

A Complete Prep to Year 12 Education

Rationale

Bentley Park College uses the Australian Student Wellbeing Framework to promote positive relationships and the wellbeing of all students, staff and visitors at the school. This framework is a major contributor to the **Preventing and Responding to Bullying Policy**.

Our staff know student learning is optimised when they feel connected to others and experience safe and trusting relationships. Enhancing the wellbeing of students and their educators delivers overall long-term social, health and economic benefits to the Australian community.

Students who feel secure are more likely to be active participants in their learning and to achieve better physical, emotional, social and educational outcomes.

Teachers who feel valued and supported are more likely to engage positively with students and build stronger connections within the College community.

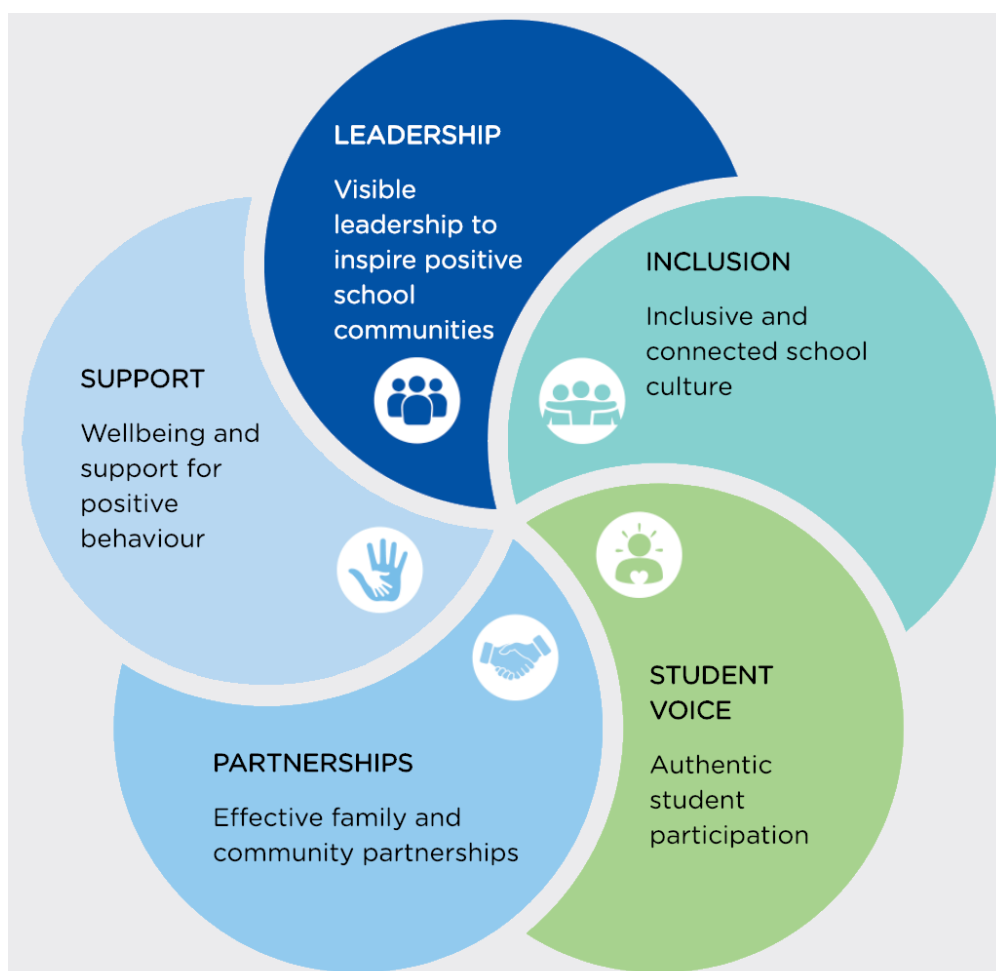
Parents/carers who are positively engaged with their child's education leads to improved student self-esteem, attendance and behaviour at school.

Purpose

To clearly outline the **Preventing and Responding to Bullying Policy** and responsibilities for students and staff.

Operation of the Policy

Bentley Park College has a Student Leadership Forum, with diverse representatives from each year level meeting regularly with the school leadership team to promote strategies to improve student wellbeing, safety and learning outcomes. The standing items on the agenda for each Student Leadership Forum are the core elements of the Australian Student Wellbeing Framework:



1. Leadership

Principals and school leaders playing an active role in building a positive learning environment where the whole college community feels included, connected, safe and respected.

2. Inclusion

All members of the College community actively participating in building a welcoming school culture that values diversity, and fosters positive, respectful relationships.

3. Student voice

Students actively participate in their own learning and wellbeing, feel connected and use their social and emotional skills to be respectful, resilient and safe.

4. Partnerships

Families and communities collaborating as partners with the college to support student learning, safety and wellbeing.

5. Support

College staff, students and families sharing and cultivating an understanding of wellbeing and positive behaviour and how this supports effective teaching and learning.

A priority for the Student Leadership Forum is contributing to the implementation of strategies that enhance wellbeing, promote safety and counter violence, bullying and abuse in all online and physical spaces.

The engagement of young people in the design of technology information and digital education programs for parents/carers was a key recommendation from the Queensland Anti-Cyberbullying Taskforce report in 2018, and at Bentley Park College we believe students should be at the forefront of advising staff, parents/carers and the broader community about emerging issues and practical solutions suitable to different contexts.

Bullying

The agreed national definition for Australian schools describes bullying as:

- ongoing and deliberate misuse of power in relationships through repeated verbal, physical and/or social behaviour that intends to cause physical, social and/or psychological harm
- involving an individual or a group misusing their power, or perceived power, over one or more persons who feel unable to stop it from happening
- happening in person or online, via various digital platforms and devices and it can be obvious (overt) or hidden (covert). Bullying behaviour is repeated, or has the potential to be repeated, over time (for example, through sharing of digital records)
- having immediate, medium and long-term effects on those involved, including bystanders. Single incidents and conflict or fights between equals, whether in person or online, are not defined as bullying.

Behaviours that do not constitute bullying include:

- mutual arguments and disagreements (where there is no power imbalance)
- not liking someone or a single act of social rejection
- one-off acts of meanness or spite
- isolated incidents of aggression, intimidation or violence.

However, these conflicts are still considered serious and need to be addressed and resolved. At Bentley Park College our staff will work to quickly respond to any matters raised of this nature in collaboration with students and parents.

The following flowchart explains the actions Bentley Park College staff will take when they receive a report about student bullying, including bullying which may have occurred online or outside of the school setting. Please note that the indicative timeframes will vary depending on the professional judgment of teachers who receive the bullying complaint and their assessment of immediate risk to student/s.

Bentley Park College - Bullying response flowchart for teachers

Please note these timelines may be adjusted depending on the unique circumstances and risk associated with each situation. This is at the professional judgment of the staff involved. Timeframes should be clearly discussed and agreed with student and family.

Key contacts for students and parents/carers to report bullying, including cyberbullying:

- **Prep to Year 6** – Class teacher
- **Year 7 to Year 9** – Teacher or Head of Department Junior Secondary:
hodjuniorsec@bentleyparkcollege.eq.edu.au
- **Year 10 to Year 12** – Teacher or Head of Department Senior Secondary:
hodseniorsec@bentleyparkcollege.eq.edu.au

First hour
Listen

- Provide a safe, quiet space to talk
- Reassure the student that you will listen to them
- Let them share their experience and feelings without interruption
- If you hold immediate concerns for the student's safety, let the student know how you will address these. Immediate in this circumstance is where the staff member believes the student is likely to experience harm (from others or self) within the next 24 hours

Day one
Document

- Ask the student for examples they have of the alleged bullying (e.g. hand written notes or screenshots)
- Write a record of your communication with the student
- Check back with the student to ensure you have the facts correct
- Enter the record in OneSchool
- Notify parent/s that the issue of concern is being investigated

Day two
Collect

- Gather additional information from other students, staff or family
- Review any previous reports or records for students involved
- Make sure you can answer who, what, where, when and how
- Clarify information with student and check on their wellbeing
- Evaluate the information to determine if bullying has occurred or if another disciplinary matter is at issue

Day three
Discuss

- Make a time to meet with the student to discuss next steps
- Ask the student what they believe will help address the situation
- Engage the student as part of the solution
- Provide the student and parent with information about student support network
- Agree to a plan of action and timeline for the student, parent and yourself

Day four
Implement

- Document the plan of action in OneSchool
- Complete all actions agreed with student and parent within agreed timeframes
- Monitor student and check in regularly on their wellbeing
- Seek assistance from student support network if needed

Day five
Review

- Meet with the student to review situation
- Discuss what has changed, improved or worsened
- Explore other options for strengthening student wellbeing or safety
- Report back to parent
- Record outcomes in OneSchool

Ongoing
Follow up

- Continue to check in with student on regular basis until concerns have been mitigated
- Record notes of follow-up meetings in OneSchool
- Refer matter to specialist staff within 48 hours if problems escalate
- Look for opportunities to improve school wellbeing for all students

Cyberbullying

Cyberbullying is treated at Bentley Park College with the same level of seriousness as in-person bullying. The major difference with cyberbullying however, is that unlike in-person bullying, cyberbullying follows students into their community, their homes and their bedrooms, giving them no opportunity to escape the harassment or abuse during the evening, weekends or holidays.

It is important for students, parents/carers and staff to know that state school principals have the authority to take disciplinary action to address student behaviours that occur outside of school hours or school grounds. This includes cyberbullying. Parents and students who have concerns about cyberbullying incidents occurring during school holidays should immediately seek assistance through the Office of the e-Safety Commissioner or the Queensland Police Service.

Students enrolled at Bentley Park College may face in-school disciplinary action, such as detention or removing of privileges, or more serious consequences such as suspension or exclusion from school for engaging in behaviour that adversely affects, or is likely to adversely affect, other students or the good order and management of the school. This includes behaviour such as cyberbullying which occurs outside of school hours or settings, for example on the weekend or during school holidays. It also applies to inappropriate online behaviour of enrolled students that is directed towards other community members or students from other school sites.

Parents/carers or other stakeholders who engage in inappropriate online behaviour towards students, staff or other parents may be referred to the Office of the eSafety Commissioner and/or the Queensland Police Service. State school staff will be referred for investigation to the Integrity and Employee Relations team in the Department of Education.

Cybersafety and Reputation Management (CRM)

The Department of Education employs a dedicated team of experts to assist in maintaining the integrity of the department's reputation with regards to cybersafety and reputation management issues, effectively leading the development and implementation of departmental cybersafety processes.

This team provides **direct support for schools** to respond to concerns of inappropriate online behaviour and misuse of information and communication technology.

The team provides a esafetyparents guide with important information about cybersafety and cyberbullying, and suggestions about what you can do if your child is a target or responsible for inappropriate online behaviour.

The team has also developed a cyberbullying and reputation management (Department employees only) resource to assist principals in incident management.

Student Intervention and Support Services

Bentley Park College recognises the need to provide intervention and support to all students involved in incidents of bullying, including cyberbullying. Students who have been subject or witness to bullying have access to a range of internal support staff, as identified in the Student Support Network section earlier in this document. Students are, however, also encouraged to approach any staff member with whom they feel comfortable sharing their concerns, regardless of their role in the school. All staff at Bentley Park College are familiar with the response expectations to reports of bullying, and will act quickly to ensure students' concerns are addressed. Depending on the nature of the reported bullying incident, a formal plan of action may be developed and documented to support the implementation of strategies to assist the student.

Students who engage in bullying behaviours towards others will also be provided with support to assist them to use more socially acceptable and appropriate behaviours in their interactions. This includes counselling, social development programs, referral to mental health services or involvement in a restorative justice strategy. College disciplinary measures may also be used to reinforce the seriousness with which the community takes all incidents of bullying. These measures may include internal school suspension, withdrawal from social events or celebrations or more severe punishments such as suspension or exclusion from school.

How to manage online incidents that impact your school

Student protection

If at any point the principal forms a reasonable suspicion that a student has been harmed or is at risk of harm, they have a responsibility to respond in accordance with the [Student protection procedure](#).

Explicit images

If the investigation involves naked or explicit images of children, staff should not save, copy, forward or otherwise deal with the content, as per the [Temporary removal of student property by school staff procedure](#). This includes onto OneSchool records. Refer to the investigative process outlined in 'Responding to incidents involving naked or explicit images of children' from the [Online Incident management guidelines](#).

Report

Refer to the [Online incident management guidelines](#) for more details, or if assistance is required, contact the Cybersecurity and Reputation Management (CSRM) team on 3034 5035 or Cybersecurity.ReputationManagement@qed.qld.gov.au.

Does the online behaviour/incident **negatively impact the good order and management** of the school?

YES OR NO

1. Initiate an incident response

Start an incident management log (running sheet) which records times and dates of events, observations, tasks completed, persons involved and written conversational notes.

2. Collect evidence

Gather and preserve any [evidence](#) of the online content or a potential unlawful online behaviour, where legally permissible. Confiscation of digital devices can only be done under the [Temporary removal of student property by school staff procedure](#).

3. Is there a potential crime?

The [Queensland Criminal Code](#) contains several applicable sections for cyberbullying. A list of potential relevant criminal offences can be viewed at [Appendix 3](#), and include:

- unlawful stalking
- computer hacking and misuse
- possession, distribution and making child exploitation material
- fraud — obtaining or dealing with identification information
- criminal defamation.

Inform the student's parent/s (and student if appropriate) of their options:

1. Report the incident to an external agency such as police, [Office of the eSafety Commissioner](#) or the [Australian Cybercrime Online Reporting Network](#).
2. Report the online content/behaviour using the online tools provided by the website or app.

Principals may start contact with a law enforcement agency (LEA) by completing an LEA referral form, under the [Disclosing personal information to law enforcement agencies procedure](#). Refer back to Step 3 to report potential crimes that do not negatively impact the good order of the school.

YES

NO

Principals may start contact with a law enforcement agency (LEA) by completing an [LEA referral form](#). Information can be shared when reasonably satisfied the disclosure is necessary for the prevention, detection, investigation, prosecution or punishment of a criminal offence or to assist in averting a serious risk to the life, health or safety of a person or where the disclosure is in the public interest. For access to the relevant forms, refer to [Disclosing personal information to law enforcement agencies procedure](#).

Principals may continue to investigate the matter for disciplinary purposes, subject to all laws and department procedures.

Content may not constitute a criminal offence requiring police involvement but it may negatively impact the good order and management of the school. Principals can take action for the online behaviour as outlined below.

4. Take steps to remove the upsetting or inappropriate content

Request poster to remove, use online reporting tools or if assistance is required, contact the CSRM team or [Office of eSafety Commissioner](#).

5. Managing student behaviour

Where the online behaviours of students do negatively impact the good order and management of the school, the principal must take appropriate follow-up action. Where appropriate:

- take statutory disciplinary action to address cyberbullying:
 - that occurs outside of school hours or school grounds that also negatively affects the good order and management of the school (e.g. where the conduct, threats, intimidation or abuse have created, or would likely create a risk of, substantial disruption within the school environment, or where the conduct, threats, intimidation or abuse has or might reach school premises);
 - that is undertaken on or originating from school premises during school hours, or by means of use of school ICT, concerning other students, staff or members of the school community;
- OR
- use non-statutory options to deal with the matter, for example:
 - discussion with student's parents;
 - student mediation;
 - apology;
 - ICT / mobile technology ban;
 - guidance referral.

6. Student welfare

Principals must consider and support the wellbeing of any student who is displaying apparent negative effects from cyberbullying, by means of offering the student guidance officer support.

7. Recording the incident on OneSchool

If the incident was resolved at school-level, record details of the incident, as reported to the school and investigated through the incident management process, in the student's OneSchool behaviour record.

Bentley Park College Anti-Bullying Compact

The Anti-Bullying Compact provides a clear outline of the way our community at Bentley Park College works together to establish a safe, supportive and disciplined school environment. This compact is provided to all students and their parents upon enrolment, and may be revisited with individual students if particular problems around bullying arise.

Anti-bullying Compact

We agree to work together to improve the quality of relationships in our community at Bentley Park College. It is through intentional consideration of our behaviour and communication that we can reduce the occurrence of bullying, and improve the quality of the schooling experience for everyone.

The agreed national definition for Australian schools describes bullying as:

- ongoing and deliberate misuse of power in relationships through repeated verbal, physical and/or social behaviour that intends to cause physical, social and/or psychological harm involving an individual or a group misusing their power, or perceived power, over one or more persons who feel unable to stop it from happening
- happening in person or online, via various digital platforms and devices and it can be obvious (overt) or hidden (covert). Bullying behaviour is repeated, or has the potential to be repeated, over time (for example, through sharing of digital records)
- having immediate, medium and long-term effects on those involved, including bystanders. Single incidents and conflict or fights between equals, whether in person or online, are not defined as bullying.

We believe that no one deserves to be mistreated and that everyone regardless of race, colour, religion, immigration status, nationality, size, gender, popularity, athletic capability, academic outcomes, social ability, or intelligence has the right to feel safe, secure and respected.

I agree to:

- treat everyone with kindness and respect
- abide by the college's anti-bullying policies and procedures
- support individuals who have been bullied
- speak out against verbal, relational, physical bullying and cyber bullying
- notify a parent/carer, teacher, or school administrator when bullying does occur.

Student Name:

Student Signature:

Parent/Carer Name:

Parent/Carer Signature:

College Representative Signature:

Date :

Documentation

- [Student Code of Conduct](#)
- [Anti-bullying compact](#)
- [Australian Student Wellbeing Framework](#)
- [Queensland Anti-cyberbullying Taskforce](#)
- [eSafety Commissioner](#)
- [eSafetyparents](#)
- [Queensland Government Cybersafety](#)



ASPIRE - LEARN - ACHIEVE