



ASPIRE - LEARN - ACHIEVE



Bentley Park College

McLaughlin Road Bentley Park QLD 4869

PO Box 289 Edmonton QLD 4869

Phone 07 4040 8111 Fax 07 4040 8100

E-mail info@bentleyparkcollege.eq.edu.au

Web www.bentleyparkcollege.eq.edu.au

ABN 60 185 065 962

10 February 2026

Dear Parent/Carer

Class of 2026 Year 12 Shirts: Second order

The Bentley Park College P&C are now taking a **second round of orders** for the Class of 2026 Year 12 Shirts. Students can wear these to school during Year 12 and keep as memento of their Senior year at Bentley Park College.

The shirt will be produced by P & C Uniforms (who produce our school uniforms) and will be a polyester sublimated shirt. The cost is **\$50** per shirt, which includes 'Class of 2026' and the entire 2026 Year 12 cohort names on the back.

This year, there is the option to choose a female cut or male/unisex cut. Designs and size chart are overleaf.

If your student would like to order one or more Senior Shirts please, complete the order slip below, indicating size, and return to the P&C Uniform Shop no later than **Monday 16 March (Week 8)**, along with full payment. Shirts will take approximately two months to arrive after ordering. Payment can be made via bank transfer, but the order form still **must** be returned with size order.

The P&C Uniform Shop is open from 8.00 am to 10.30 am on Mondays, Wednesdays and Fridays (school terms).

Yours sincerely

Mr Richard Elstone
Year 12 Coordinator

Mrs Rebekah Bidois
Head of School Secondary

Bentley Park College Class of 2026 Year 12 Shirt Order Slip and \$50 payment (second order)

Student Name: _____

Number of shirts at \$50 each: _____

Ladies Size (please circle):

4 6 8 10 12 14 16 18 20 22 24

OR Mens/unisex Size (please circle):

2XS XS S M L XL 2XL 3XL 4XL 5XL 6XL 7XL

Parent/Carer Signature: _____

(Please complete and return to the P&C Uniform Shop
with payment **by Monday 16 March**)

Please enclose payment with your order:

TOTAL enclosed \$ _____

☐ Cash (or you can pay by EFTPOS at the Uniform Shop)

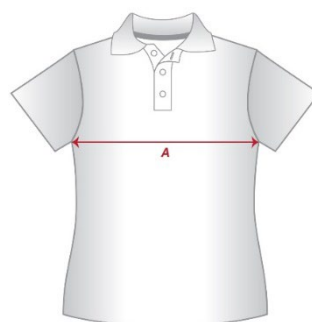
☐ Direct Deposit to P&C:

Account Name: **Bentley Park College PNC** BSB: **633-000**

Acct. No: **1433 585 21**

Please put **student full name and Y12shirt** as the reference

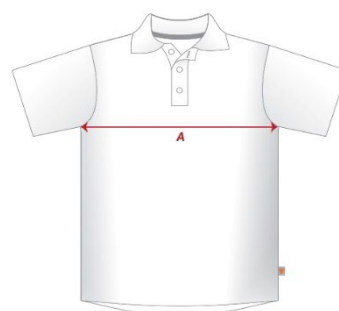
Female sizes



*B = Measure from neckline to hem.

Adult Sizes:	4	6	8	10	12	14	16	18	20	22	24
Half Chest (A)	40	42.5	45	47.5	50	52.5	55	57.5	60	62.5	65
Standard Length (B)	62	63	64	65	67	69	71	72	73	74	75
With Back Hem (B)	64	65	66	67	69	71	73	74	75	76	77

Male sizes



*B = Measure from neckline to hem.

Youth Sizes:	2J	4J	6J	8J	10J	12J	14J	16J
Half Chest (A)	32	34	37	40	43	46	49	52
Standard Length (B)	41	45	49	53	57	61	65	67
With Drophem (B)	43	47	51	55	59	63	67	69

Adult Sizes:	2XS	XS	S	M	L	XL	2XL	3XL	4XL	5XL	6XL	7XL
Half Chest (A)	50	52.5	55	57.5	60	62.5	65	67.5	70	72.5	75	77.5
Standard Length (B)	67	69	71	73	75	77	79	81	83	85	87	89
With Drophem (B)	69	71	73	75	77	79	81	83	85	87	89	91

All measurements are in centimetres (CM)

**Please note, these are garment measurements, not body measurements.
We recommend using a well-fitting top you already own, lying it flat,
and measuring underarm to underarm.
Then, match the measurement to the table for the best fit.**