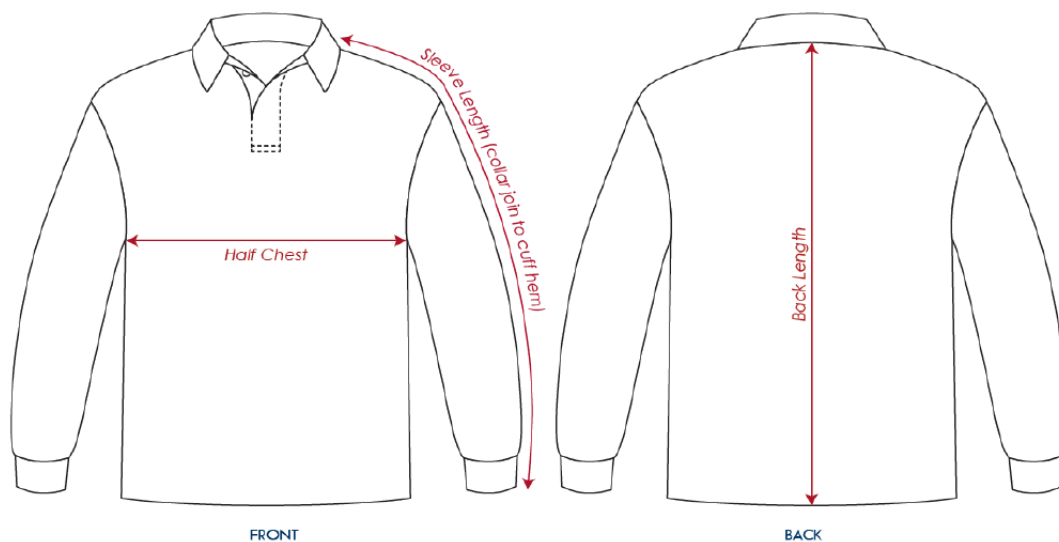




JERSEY SIZES

- Sizes are fairly true to size. So if you normally wear a Large in another well-known brands then we suggest you order the same size.
- Half chest measurements are in centimetres (cm) and measures from armpit to armpit across the front of the garment. The length is from the top of the back of the neck down to the bottom edge (hem) of the garment.

PC725 Old School Knit Jersey



SPECIFICATIONS (All measurements in cm)

MEASUREMENT	8	10	12	14	16	S	M	L	XL	2XL	3XL	4XL	5XL	6XL
Half Chest	41	43.5	46	48.5	51	53.5	56	58.5	61	63.5	66	68.5	71	73.5
Back Length	62	64	66	68	70	72	74	76	78	80	82	84	86	88
Sleeve Length	67	69	71	73	75	77	79	81	83	85	87	89	91	93

PLEASE NOTE THESE ARE GARMENT MEASUREMENTS, NOT BODY MEASUREMENTS.